

**St Patrick's Catholic
Primary School
Asquith**



Uniform Policy

St Patrick's Catholic Primary School
Asquith

St Patrick's Uniform Policy

All items (except shoes) are available at the Uniform Shop.

******Please label ALL your child's possessions clearly******

ALL STUDENTS

ALL YEAR

School Hat

School Backpack

School Excursion Bag

Art Smock

Sloppy Joe Jumper: Green

Black, leather, polishable school shoes. Lace up (black laces only)/buckle/velcro

→ Sport shoes/joggers are **NOT** permitted

SPORTS UNIFORM

Unisex Shirt: Short Sleeve Gold with School Logo

Unisex Shirt: Long Sleeve Gold with School Logo

Unisex Shorts: Bottle Green

Unisex Tracksuit Pants: Bottle Green Microfibre

Unisex Tracksuit Jacket: Bottle Green with School Logo

Girls Skirt: Bottle Green

Crew Socks: Bottle Green

NOT Tennis style socks that are below ankle

Black Sport Shoes (Joggers)

NO colour on shoes. Black laces only/Velcro

BOYS

SUMMER UNIFORM

Boys Shirt: Short Sleeve Green with School Logo

Boys Shorts: Short Leg Grey **NOT Cargo Style**

Crew Socks: Grey

WINTER UNIFORM

Boys Shirt: Long Sleeve Green with School Logo

Boys Pants: Long Leg Grey **NOT Cargo Style**

Boys Tie: Bottle Green

**Shirts must be tucked in for both summer and winter uniform*

GIRLS

SUMMER UNIFORM

Girls Summer Dress

Crew Socks: Green

WINTER UNIFORM

Girls Blouse: Long Sleeve Lemon

Girls Winter Tunic

Girls Tie

Cotton Tights: Bottle Green OR Crew Socks: Green

ACCESSORIES

OPTIONAL CLOTHING

Gloves: Bottle Green

Rain Poncho: Gold or Green Hood

Scarf: Bottle Green OR Candela Green with Gold Stripe

HAIR

Shoulder length hair or longer **MUST** be tied back

Elastics: Brown, blonde, bottle green or gold coloured

Ribbons: Bottle green or gold coloured ribbons

Neat and tidy haircuts

Natural hair colour

Extreme hairstyles which draw attention to the students through cut, colour, additive products, etc are not permitted.

NAIL

Nail Polish is NOT permitted

JEWELLERY

Earrings: Small Plain Silver or Gold Studs (*Girls Only*)

Wrist Watch: Plain colours, a watch which **ONLY** tells the time

(FitBits are permitted if **NOT** connected to phone or tablet devices)

“Smart” Watches, e.g. Apple Watches are NOT permitted at school.

Bands: Mercy Action Group band presented to MAG students at beginning of year.

→ *No other bracelets or bands of any kind are permitted.*

EXAMPLES OF CORRECT UNIFORM

SUMMER UNIFORM



WINTER UNIFORM



SPORT UNIFORM



SPORT UNIFORM



UNIFORM DOS AND DON'TS

UNIFORM DO



UNIFORM DON'T



SHOES



SOCKS



ACCESSORIES



UNIFORM DO



UNIFORM DON'T



HAIR



HAIR ACCESSORIES



UNIFORM DO



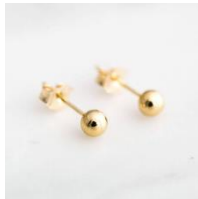
UNIFORM DON'T



NAILS



JEWELLERY



WATCHES



This policy is current as of 28/11/2019.